

CABINET

BOOSTER & FEED HYDRANT 100mm DUAL

PRODUCT CODE: CBFH100



Quality
ISO 9001

OPTIONS AVAILABLE

Break glass & lock
Custom colouring & stencilling

PAINT COLOUR

Signal red R13

INSTALLATION

Bolt through feet to ground or through back to wall

MATERIAL

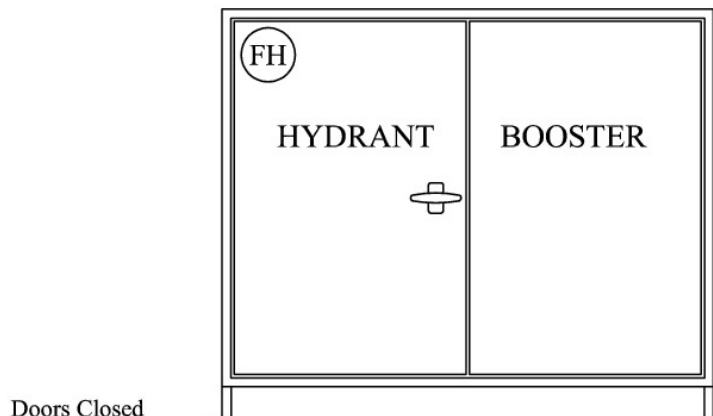
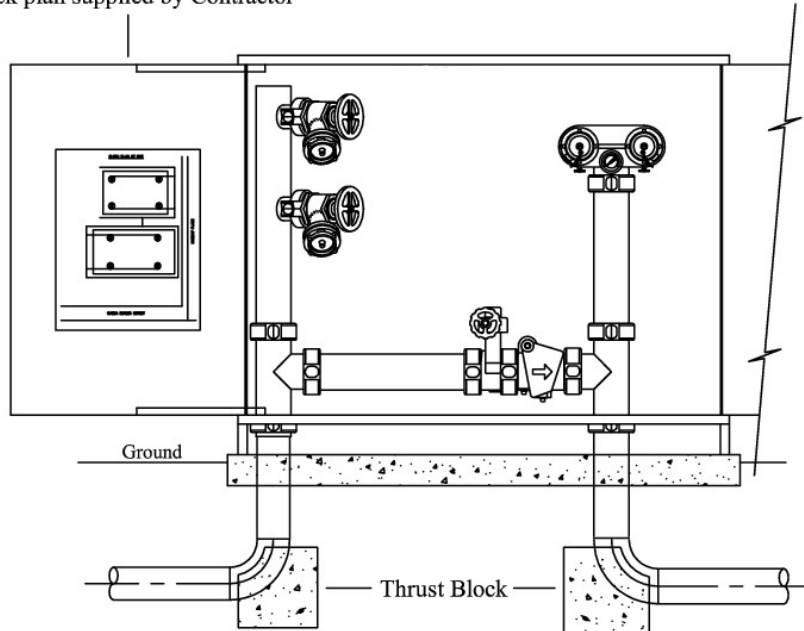
Body: 20# Zinc seal
Handle: Chrome plated metal

DIMENSIONS

Width: 1600mm
Height: 1400mm (inc.200mm legs)
Depth: 500mm

Sizes may vary due to supply of product, contact office to confirm

Bracket to stopdoor beyond 90°
Block plan supplied by Contractor



Cabinet only - Equipment sold separately