



**OPTIONS AVAILABLE**

Handle Types (i.e. T, L, Flush, Coin etc)  
Custom colouring & stencilling

**PAINT COLOUR**

Crimson Red R15

**INSTALLATION**

Bolt through feet to ground or through back to wall

**MATERIAL**

Body: 20# Zinc seal  
Handle & Lock: Chrome plated metal

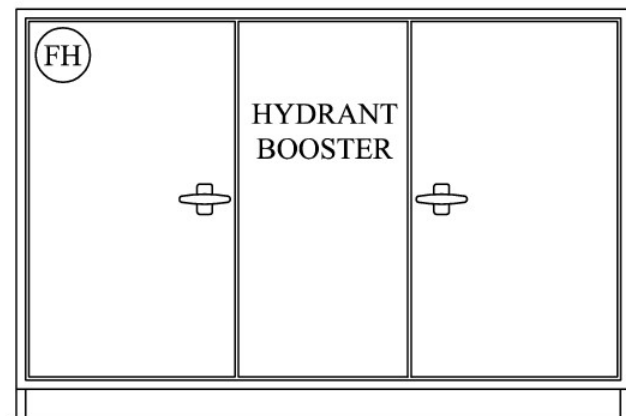
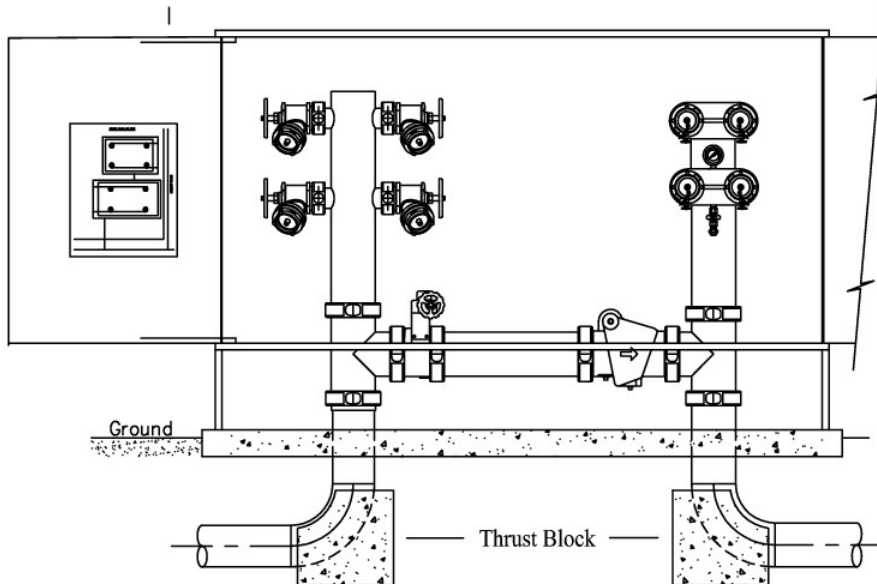
**DIMENSIONS**

Width: 2300mm  
Height: 1530mm (inc.300mm legs)  
Depth: 700mm

\*Sizes may vary due to supply of product, contact office to confirm\*

Bracket to stopdoor beyond 90°  
Block plan supplied by Contractor

NOTE: Manufactured standard with 2 doors  
& removable centre infill panel



Doors Closed

\*Cabinet only - Equipment sold separately\*