

# CABINET: BOOSTER & FEED HYDRANT 100mm DUAL

## PRODUCT CODE

CBFH100

## MATERIAL

20# Zinc seal

## INSTALLATION

Bolt through feet to ground  
or through back to wall

## DIMENSIONS

WIDTH: 1600mm

HEIGHT: 1400mm (inc.200mm legs)

DEPTH: 500mm

## OPTIONS AVAILABLE

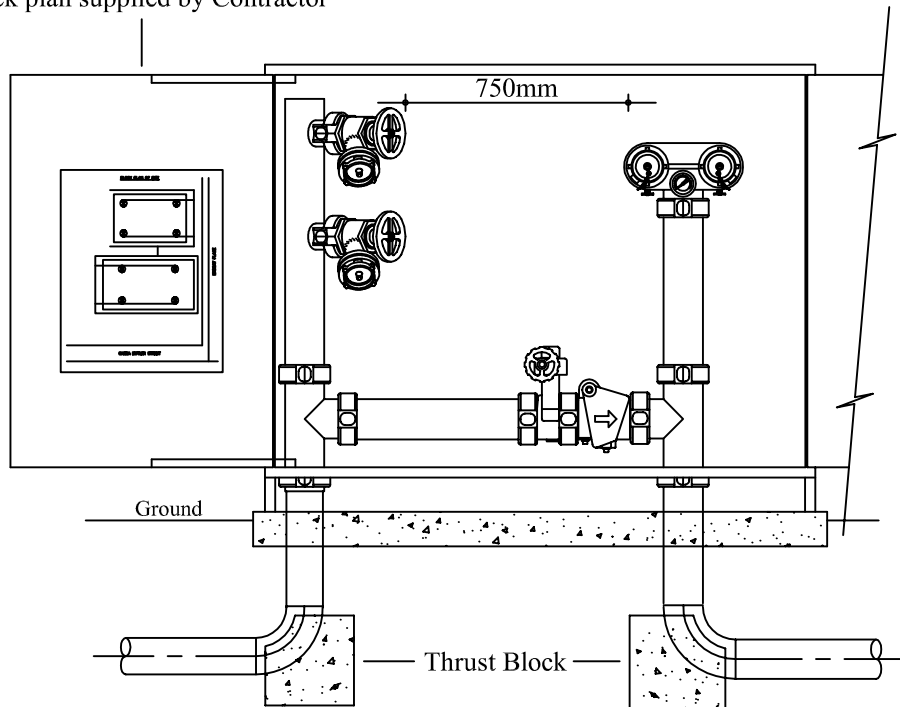
Break glass & lock

Flush mount handle

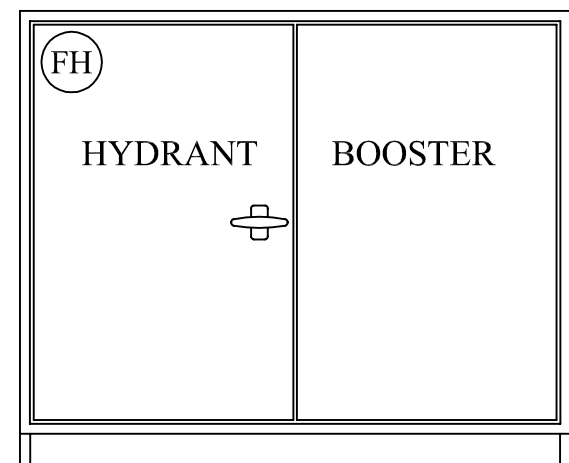
## PAINT COLOUR

Signal red R13

Bracket to stopdoor beyond 90°  
Block plan supplied by Contractor



Doors Closed



\* CABINET ONLY - EQUIPMENT SOLD SEPARATELY